

EN – KemTab extraction tables operating manual (original)

-

1	General	- 6 -
1.1	Introduction.....	- 6 -
1.2	References to copyright and industrial property rights.....	- 6 -
1.3	Notes for the operating company	- 6 -
2	Safety.....	- 8 -
2.1	General information	- 8 -
2.2	Information on signs and symbols.....	- 8 -
2.3	Markings/signs to be affixed by the operating company	- 9 -
2.4	Safety instructions for operating staff	- 9 -
2.5	Safety instructions for maintenance/troubleshooting.....	- 10 -
2.6	Notes regarding special types of hazard	- 10 -
3	Product information.....	- 12 -
3.1	Functional description.....	- 12 -
3.2	Intended use.....	- 16 -
3.3	Reasonably foreseeable misuse	- 16 -
3.4	Markings and signs on the product	- 17 -
3.5	Residual Risk	- 17 -
4	Transport and Storage	- 19 -
4.1	Transport	- 19 -
4.2	Storage	- 19 -
5	Assembly.....	- 22 -
5.1	Unpacking and assembling the product.....	- 22 -
	Mounting – Connecting extraction tables (option)	- 29 -
6	Use	- 36 -
6.1	Qualification of the operating personnel	- 36 -
6.2	Commissioning.....	- 36 -
7	Maintenance	- 37 -
7.1	Safety instructions for maintenance.....	- 37 -
7.2	Care	- 38 -
7.2.1	Maintenance schedule	- 39 -
7.2.2	Emptying the dust collection container	- 39 -
7.3	Troubleshooting.....	- 42 -
7.4	Emergency measures	- 43 -

8 Disposal	- 44 -
8.1 Plastics	- 44 -
8.2 Metals.....	- 44 -
8.3 Filter elements.....	- 44 -
9 Annex	- 45 -
9.1 EC declaration of incorporation	- 45 -
9.2 UKCA Declaration of Installation	- 46 -
9.3 Dimensions sheet	- 47 -
9.4 Technical data	- 48 -
9.5 Spare parts and accessories	- 49 -

1 General

1.1 Introduction

This manual is an essential aid for the proper and safe operation of the product.

These operating instructions contain important information to ensure safe, proper and efficient operation of the product. Observing these instructions helps avoiding danger, reducing repair costs and downtimes and increasing the reliability and service life of the product. The operating instructions must be kept available at all times and have to be read and applied by every person who is assigned to work on or with the product.

These include amongst others:

- the operation and troubleshooting during operation
- the maintenance (care, maintenance, repair)
- the transport
- the assembly
- the disposal

Technical modifications and errors expected.

1.2 References to copyright and industrial property rights

These Operating Instructions should be kept confidential. They should be made accessible only to authorised persons. They may be passed on to third parties only with the written consent from KEMPER GmbH, referred to as manufacturer in the following.

All documents are protected under the Copyright Act. The reproduction and distribution of documents, including excerpts, as well as re-use and passing on of their contents is not permitted. Unless this is expressly permitted in writing.

Violations are liable to prosecution and liable for damages. The manufacturer reserves the right to exercise all intellectual property rights.

1.3 Notes for the operating company

The operating instructions are an essential part of the product.

The operating company must ensure that the operating personnel is aware of the contents of this manual.

Based on national regulations for accident prevention and environmental protection, the operating instructions are to be supplemented by the operating company's own operating instructions, including information on regulatory and reporting requirements to meet specific operating requirements, such as work organisation, work flow and staff employed. In addition to the operating instructions and the relevant obligatory

regulations for accident prevention applicable in the country of use, it is also imperative to comply with the recognised technical rules for safe and professional handling.

Without prior consent from the manufacturer, the operating company may not carry out any changes, conversions or additions to the product which may impair safety. Spare parts used must comply with the manufacturer's specified technical requirements. This is always the case with original replacement parts.

Only use trained and instructed staff for the operation, maintenance, repair and transport of the product. Clearly define for staff who is responsible for operation, maintenance and transport.

2 Safety

2.1 General information

The product is designed and built according to state-of-the-art technology and the recognised safety rules and regulations. When operating the product, technical hazards for the operator or impairment of the product as well as other property may occur, if:

- it is not operated by trained or instructed personnel
- it is not used for the purpose intended and/or
- it is improperly maintained

2.2 Information on signs and symbols

▲ DANGER

This symbol in conjunction with the signal word "Danger" indicates imminent danger. Non-adherence of the safety note leads to death or serious injuries.

▲ WARNING

The symbol in conjunction with the signal word "Warning" indicates a potentially dangerous situation. Non-adherence to the safety notice may lead to death or serious injuries.

▲ CAUTION

The symbol in conjunction with the signal word "Caution" indicates a potentially dangerous situation. Non-adherence of the safety note may lead to slight or negligible injuries.

May also be used for warnings against property damage.

NOTE

The general information is simple additional information which does not warn about personal injury or property damage.

1. Enumerations of action steps are marked as numbers with a dot, where the order is important.
- Bullet points indicate lists of parts in a legend or instructions for which the sequence is unimportant

2.3 Markings/signs to be affixed by the operating company

The operating company is obliged to post further markings and signs on the product and the surrounding area if necessary.

Such markings and signs might be related, for example, to the requirement for wearing personal protective equipment.

2.4 Safety instructions for operating staff

Before use, the operator of the product must be instructed through information, instructions and training on the handling of the product and the materials and aids to be used.

The product system may only be used in technically perfect condition, for its intended purpose, in full awareness of the safety aspects and potential dangers and in accordance with these instructions. All errors, especially those that may affect safety, must be removed immediately.

Every person who is charged with commissioning, operation or maintenance must have fully read and understood these operating instructions. This specifically applies to staff who only operate the product occasionally.

The operating instructions must always be within reach of the product.

We accept no liability for any damages or injuries caused by failure to observe these operating instructions.

The relevant accident prevention regulations and other generally recognised safety and occupational health regulations must be observed.

The responsibilities for the various activities included in maintenance and repair must be clearly defined and adhered to. Only then will human error - especially in dangerous situations - be avoided.

The operating company is to enforce wearing of personal protective equipment by operating and maintenance staff. These include in particular safety shoes, safety glasses and gloves.

Do not wear loose, long hair, loose clothing or jewellery. In theory, there is a risk of getting caught on something, or being pulled in or dragged along by moving parts.

If there are any safety-related changes to the product, immediately halt the process, secure it and report the occurrence to the relevant authority/person!

Work on the product may only be carried out by reliable, trained staff. Observe the minimum legal age.

Staff who require training, teaching or instructing or staff who undergo a general apprenticeship may only operate the product under the supervision of an experienced member of staff.

2.5 Safety instructions for maintenance/troubleshooting

Service and maintenance doors must be freely accessible at all times.

Setting up, maintenance and repair work and troubleshooting must only be performed when the product is switched off.

Always tighten bolt connections that have been loosened during repair work. If specified, tighten the relevant bolts with a torque wrench.

In particular, protect connections and screw connections from dirt or care products at the beginning of maintenance/repair/care

The time frames for periodic testing/inspections stipulated or specified in the operating instructions must be observed.

Before disassembling, mark the parts that belong together.

2.6 Notes regarding special types of hazard

⚠ DANGER

Suspended loads

Tipping or falling loads lead to severe to fatal injuries.

- Never step under suspended loads.
- Always remain outside the danger zone.
- Observe the total weight, attachment points and centre of gravity of the load.
- Observe the transport instructions and symbols on the transported goods.

⚠ WARNING

Health hazards caused by welding fume particles

Do not inhale welding dust / smoke! Serious injury to the lungs and respiratory tract is possible!

Sweat smoke contains substances that can cause cancer!

Skin contact with cutting and welding fumes etc. can cause skin irritation in sensitive persons!

Repair and maintenance work on the product may only be carried out by trained and authorised personnel while complying with the safety rules and the applicable accident prevention regulations.

To avoid contact with and inhalation of the dust particles, wear disposable overalls, protective goggles, gloves and a suitable Class FFP2 respiratory protection filter mask in accordance with EN 149.

The release of hazardous dust particles during repair and maintenance is to be avoided to ensure that persons not charged with the task are not affected.

▲ WARNING

Work on the compressed air vessel and on the compressed air lines and components may only be performed by persons with expertise in pneumatics.

The pneumatic system must be isolated and depressurised prior to the performance of maintenance and repair work on the external compressed air supply.

▲ WARNING**Danger of burns or scalding!**

The surfaces of the product can reach temperatures of more than 70 °C during operation.

Before maintenance and repair work, allow the product to cool down or wear heat-protective gloves.

3 Product information

3.1 Functional description

The product is an extraction table that is used to extract the welding fumes produced during welding close to the point of origin.

The dust particles and smoke particles produced on the product when cutting the sheets are extracted downwards into the extraction table. For this purpose, the extraction table is divided into several extraction sections by vertical metal partitions.

An internal, integrated extraction channel runs along the side of the table and is equipped with mechanical or pneumatically operated flaps for each of these sections.

A control slide attached to the processing portal controls the respective air flaps. This ensures that only the section above which the burner head is currently located is extracted.

A connected, correctly dimensioned extraction and filter system is required for the product to function properly; this is available as an option from the manufacturer.

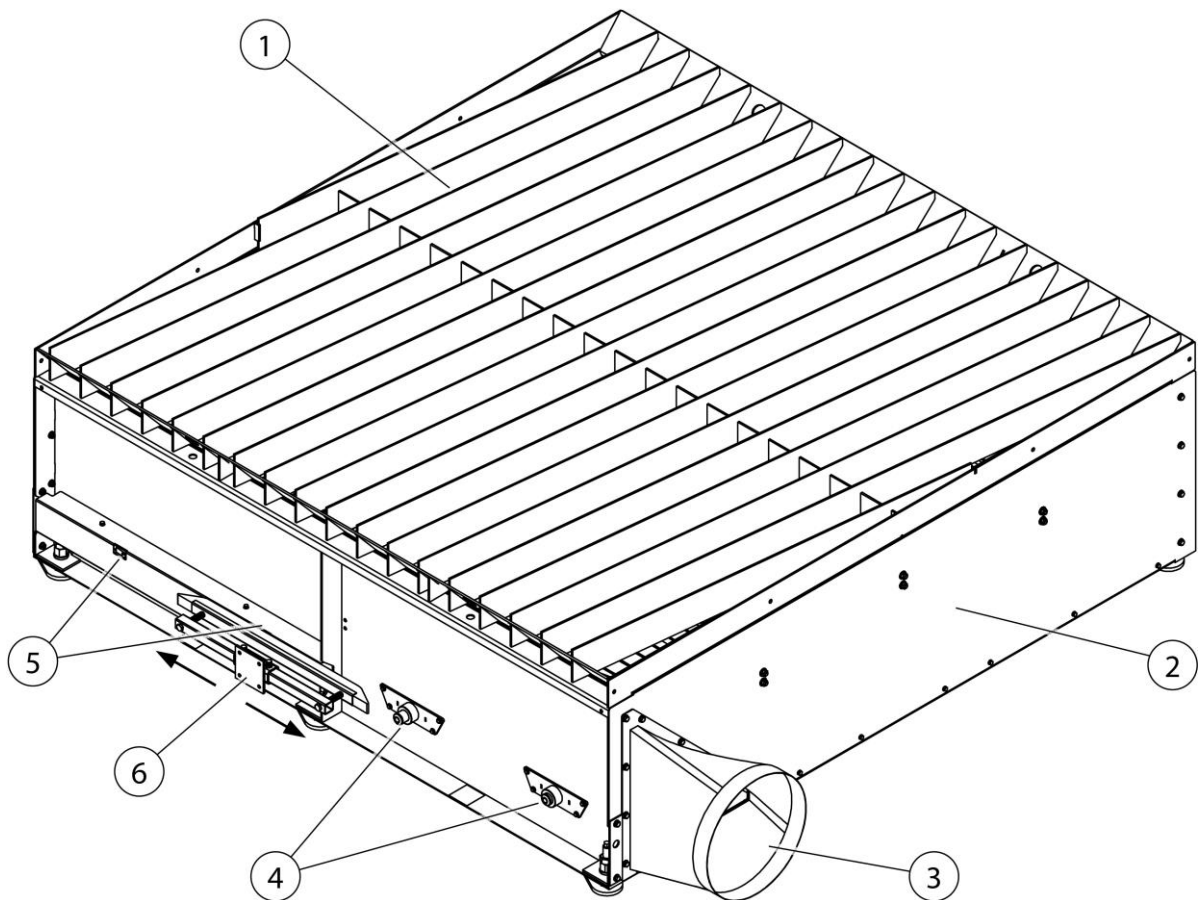


Fig. 1: Functional description

Pos.	Description	Pos.	Description
1	Support frame	4	Mechanical actuation of the air flaps (option)
2	End plate	5	Pneumatic actuation of the air flaps (option)
3	Connecting piece for piping	6	Control slide – for actuation of the air flaps

Tab. 1: Functional description

The control slide (Pos. 6) is connected to the welding or cutting system provided by the customer. When moving the burner head, only the air flap (Pos. 4 or 5) under which the burner head is located is actuated with the slide.

Overview of components

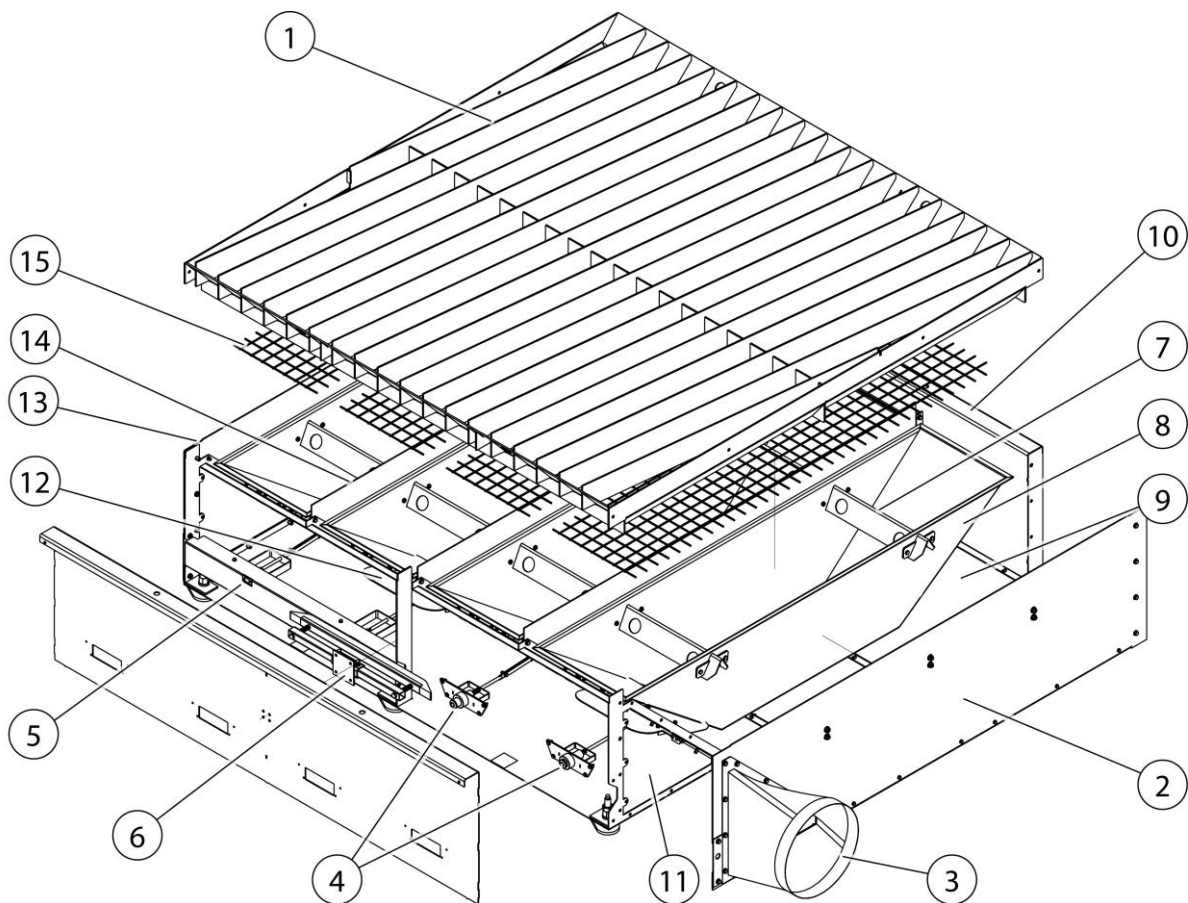


Fig. 2: Overview of components

Pos.	Description	Pos.	Description
1	Support frame	9	Base plate (option)
2	End plate	10	Table frame
3	Connecting piece for piping system	11	Air channel
4	Mechanical actuation of air flaps (option)	12	Butterfly valve
5	Pneumatic actuation – air flap (option)	13	End cover
6	Control slide	14	Partition wall
7	Support bracket with lifting holes	15	Steel grating
8	Slag box		

Tab. 2: Overview of components

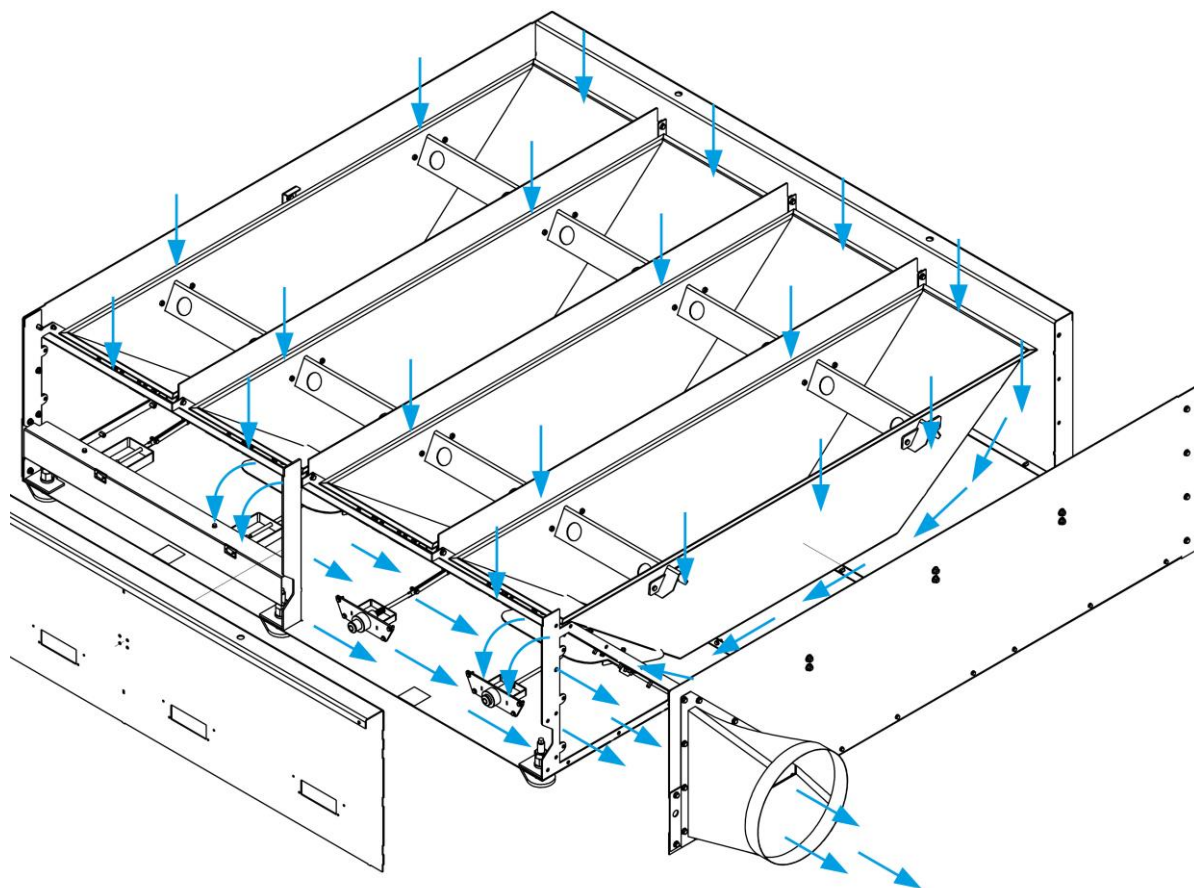


Fig. 3: Functional description – Air flow

Safety instructions:

ATTENTION

- Proper function is only guaranteed with a filter system designed for the product.
- The maximum load must not be exceeded. See chapter "Technical data".
- Avoid punctual loads! The product is designed for surface loads. Always place materials horizontally or flat on the table.

3.2 Intended use

The product is used in the metalworking industry.

The product is an extraction table on which metal parts/steel plates can be processed.

The product is designed to extract fumes and dust particles generated during the welding and cutting of metals directly at the point of origin. For example, in the thermal cutting of steel plates during plasma and laser cutting.

The extraction capacity and effectiveness of the product depends on the type of capturing device and the connected extraction and filter system as well as the degree of contamination of the exhaust air.

In principle, the product can be used in all metalworking processes in which smoke and dust particles are released.

The product must not be used in explosive atmospheres or for extracting acids, alkalis and flammable substances and vapours.

The technical data includes the dimensions and further details for the product, which have to be observed.

NOTE

The information in the "Technical data" chapter must be observed and strictly adhered to.

Intended use also includes observation of the instructions and information on

- safety
- operation and control
- maintenance and servicing

contained in this operating manual.

Any other use or use that goes beyond this is considered improper use. The company operating the product is solely responsible for any damage resulting from it. This also applies to unauthorised modifications to the product.

3.3 Reasonably foreseeable misuse

No reasonable, foreseeable misuse is possible that could lead to dangerous situations with personal injury when working with the product whilst adhering to its intended use.

The operation of the product in industrial areas that do not comply with the requirements for explosion protection is not permissible. Furthermore, the operation is prohibited for:

1. Processes that are not in the intended use list and in which the extracted air is:
 - mixed with liquids and the resulting contamination of the air flow with vapours containing aerosols and oils;
 - mixed with highly flammable, combustible dusts and/or with substances that can form explosive mixtures or atmospheres;
 - mixed with other aggressive or abrasive dusts;
 - mixed with organic, toxic substances/parts of substances;
2. Outdoor locations where the product is exposed to weather conditions – the product must only be used in closed buildings.

3.4 Markings and signs on the product

Various markings and signs are affixed to the product. If these are damaged or removed, please replace them immediately with new ones in the same location.

The operating company is obliged to post further markings and signs on the product and the surrounding area if necessary.

Such notes and signs might be related, for example, to the requirement for wearing personal protective equipment.

In the country of use, additional required safety instructions and pictograms can be provided by the manufacturer in accordance with applicable law.

3.5 Residual Risk

Even when all safety rules are observed, when operating the product a residual risk remains, as described below.

All persons working on and with the product must be aware of these residual risks and follow the instructions that prevent these residual risks from causing accidents or damages.

⚠ WARNING

Danger of serious injury to the lungs and respiratory tract – always wear respiratory protection, Class FFP2 or higher.

Skin contact with welding fumes, etc. can cause skin irritation in susceptible individuals – wear protective clothing.

During setup and preparation work, it may be necessary to dismantle on-site safety devices. This creates various residual risks and potential hazards that the operating personnel must be aware of.

The welding process may only be performed if the product has been set to match the extraction of welding fumes.

4 Transport and Storage

4.1 Transport

⚠ DANGER

Life-threatening crushing possible when loading and transporting the product!

Improper lifting and transporting may cause the pallet (if present) to tilt and fall!

- Never stand under suspended loads.
- Observe the permissible loads of the transport and lifting aids.
- Observe the applicable accident prevention and occupational safety regulations.

For transporting products with a pallet, use a suitable pallet truck or forklift. The weight of the product can be found on the name plate.

4.2 Storage

The product must be stored in its original packaging at an ambient temperature of 20 °C to +50 °C in a dry and clean place. The packaging must not be loaded by other objects.

The storage duration is not critical for all products.

The product is delivered on a pallet. Use a suitable forklift or pallet truck to transport the product.

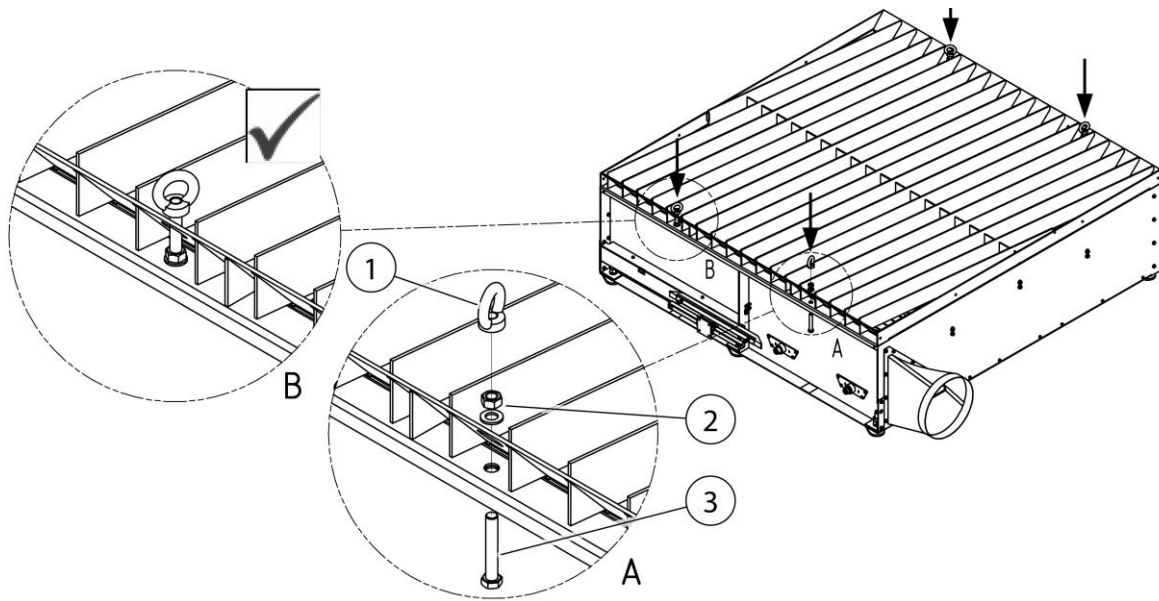


Fig. 4: Transporting the product

Pos.	Description	Pos.	Description
1	Ring nut	3	Hexagon bolt
2	Hexagon nut + washer		

Tab. 3: Transporting the product

4 x ring nut, hexagon bolt, hexagon nut and washer are included for mounting and further transport of the product.

To mount the product, proceed as follows:

1. Screw the 4 x ring nuts (Pos. 1) to the product using the fixing materials (Pos. 2 + 3).

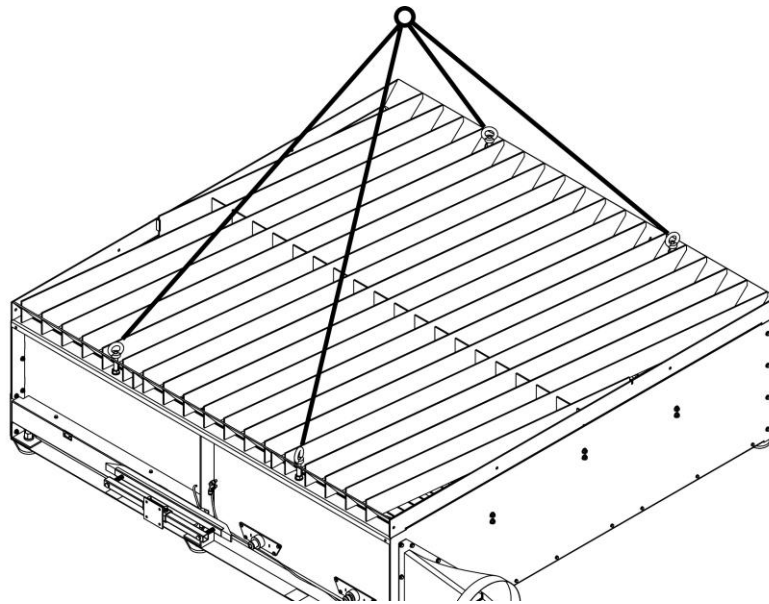


Fig. 5: Transport with crane

2. Use suitable lifting equipment to lift the product by the ring nuts (Pos. 1) and transport it to its destination.

5 Assembly

Instructions for safe installation of the product

NOTE

The operating company of the product may only assign specialists to carry out independent assembly.

- At least two people are needed to assemble the product.
 - Only use suitable transport and lifting equipment.
 - It must be ensured that the assembly location provides sufficient load-bearing capacity.
 - Only use suitable fixing material.
 - The fixing material must be selected according to the local conditions.
 - The product must not obstruct anyone in their working area.
 - Existing air outlet grilles must not be covered.
 - Existing maintenance doors and covers must be freely accessible.
-

⚠ DANGER

Falling parts may cause life-threatening injuries!

Tipping or falling loads lead to severe to fatal injuries.

- Never step under suspended loads.
 - Always remain outside the danger zone.
 - Observe the total weight, attachment points and centre of gravity of the load.
 - Observe the transport instructions and symbols on the transported goods.
-

⚠ WARNING

Incorrect connections may cause serious injuries!

Please note the necessary safeguards and only have the product connected by trained specialists.

5.1 Unpacking and assembling the product

The product is supplied pre-mounted or in individual parts. The required connecting material is enclosed with the product.

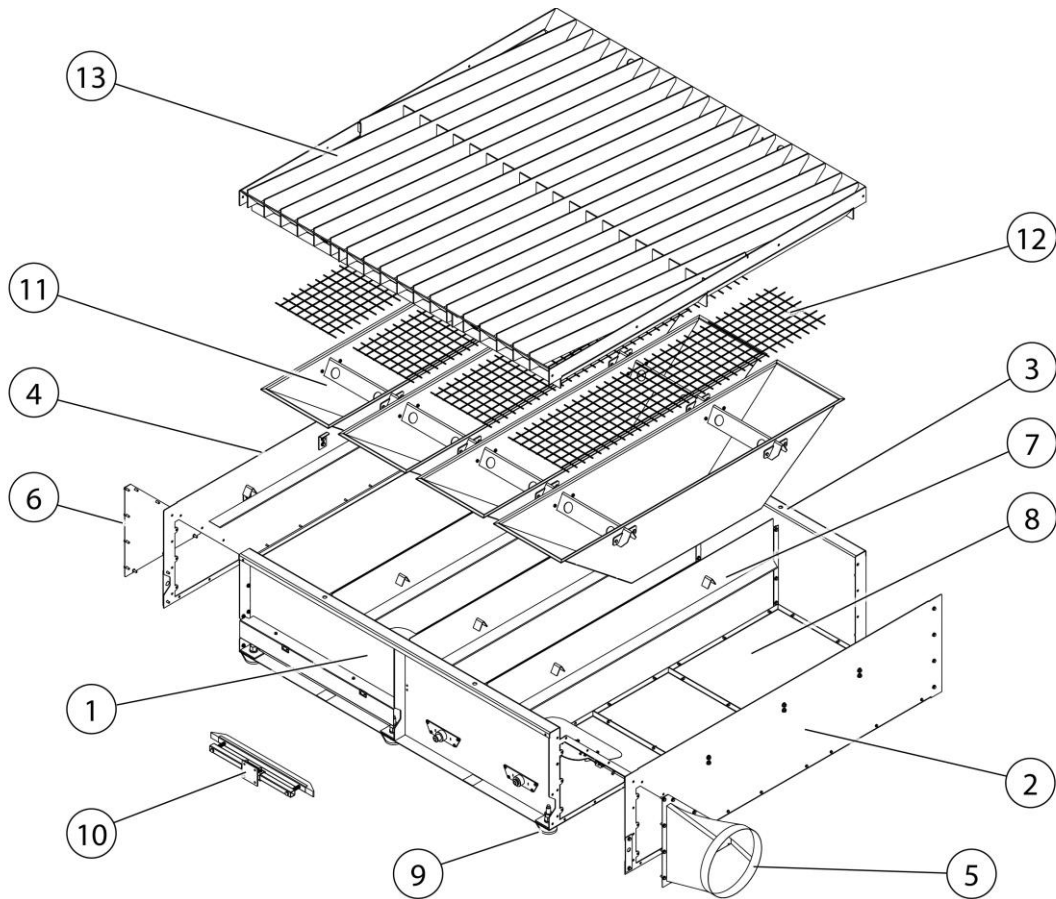


Fig. 6: Overview of the components

Pos.	Description	Pos.	Description
1	Air channel	8	Base plate (option)
2	End plate 1	9	Adjustable machine foot
3	Side plate	10	Control slide
4	End plate 2	11	Slag box
5	Connecting piece	12	Steel grating
6	End cover	13	Support frame
7	Partition wall		

Tab. 4: Overview of the components

To mount the product, proceed as follows:

1. Remove the tension straps and the packaging film.

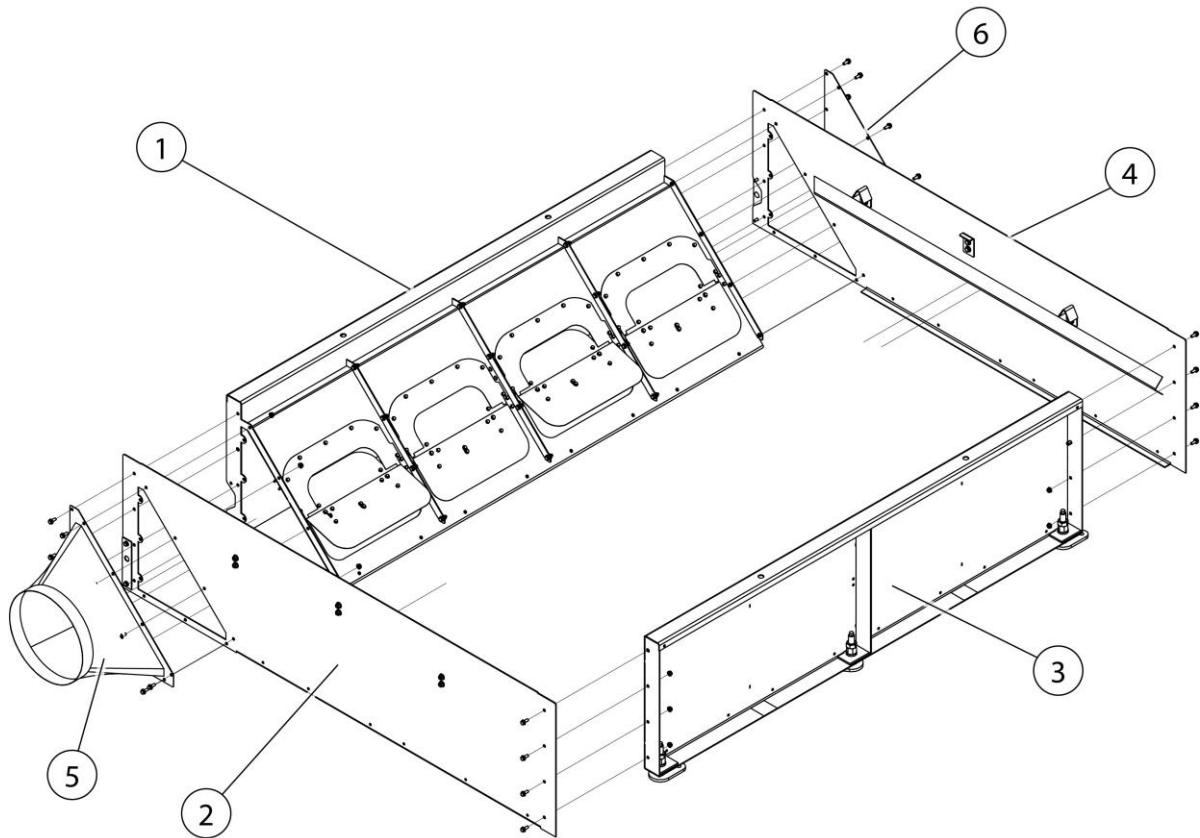


Fig. 7: Mounting the components

2. Screw end plate 1 (Pos. 2) to the connection piece and the air channel (Pos. 1) as well as the side plate (Pos. 3) as shown in the figure.

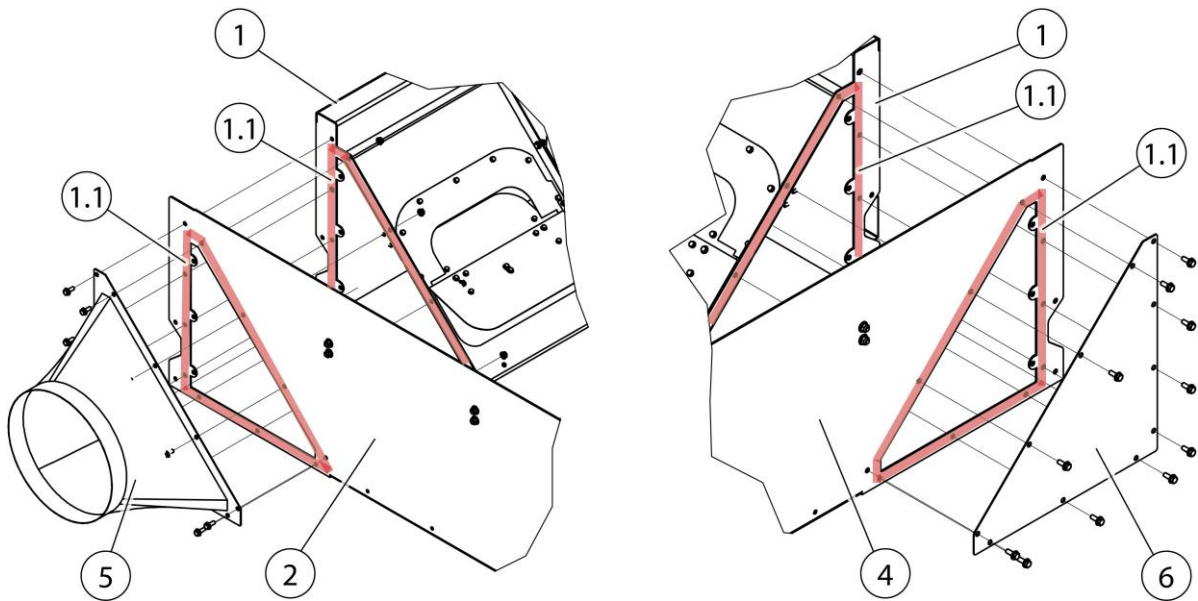


Fig. 8: Mounting – End plate + connecting piece

3. Apply the enclosed sealing tape to the flange surfaces (Pos. 1.1) of the air channel (Pos. 1 + 2) as shown in the figure.
4. Then screw end plate 2 (Pos. 4) and the end cover to the air channel (Pos. 1) and the side plate (Pos. 3).

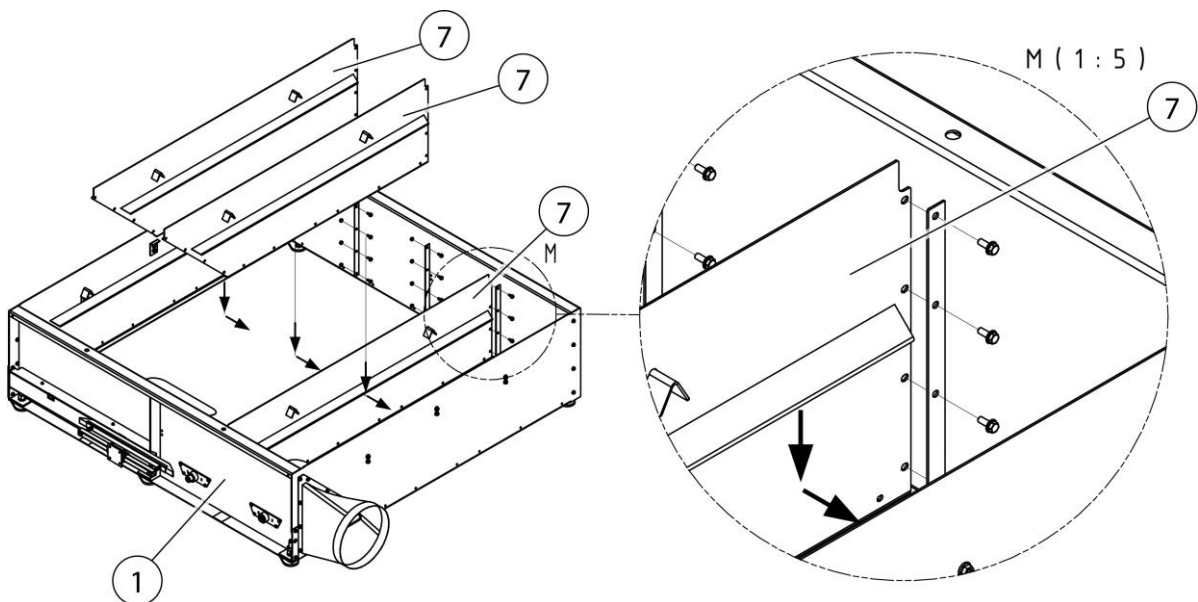


Fig. 9: Mounting – Partition walls

5. Insert the partition walls (Pos. 7) and screw them together. Ensure correct positioning according to the arrows.

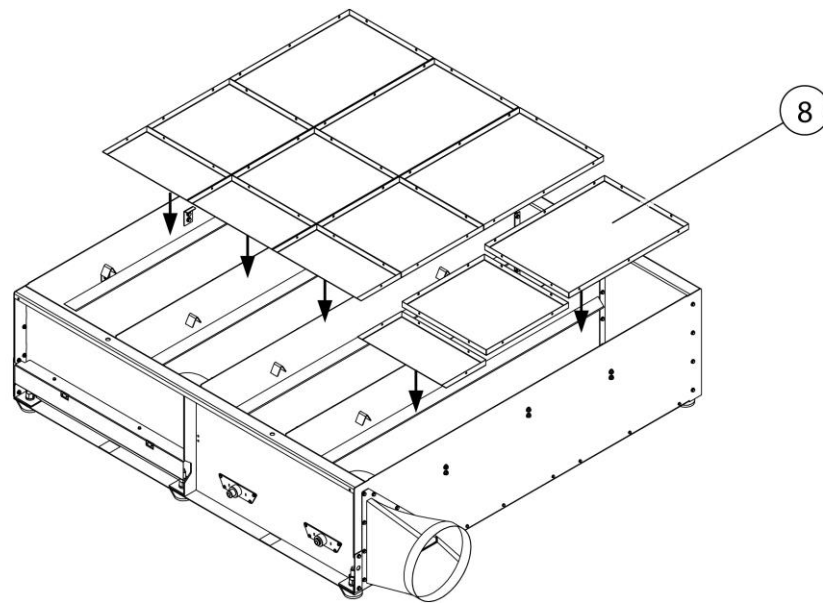


Fig. 10: Mounting – Base plates (option)

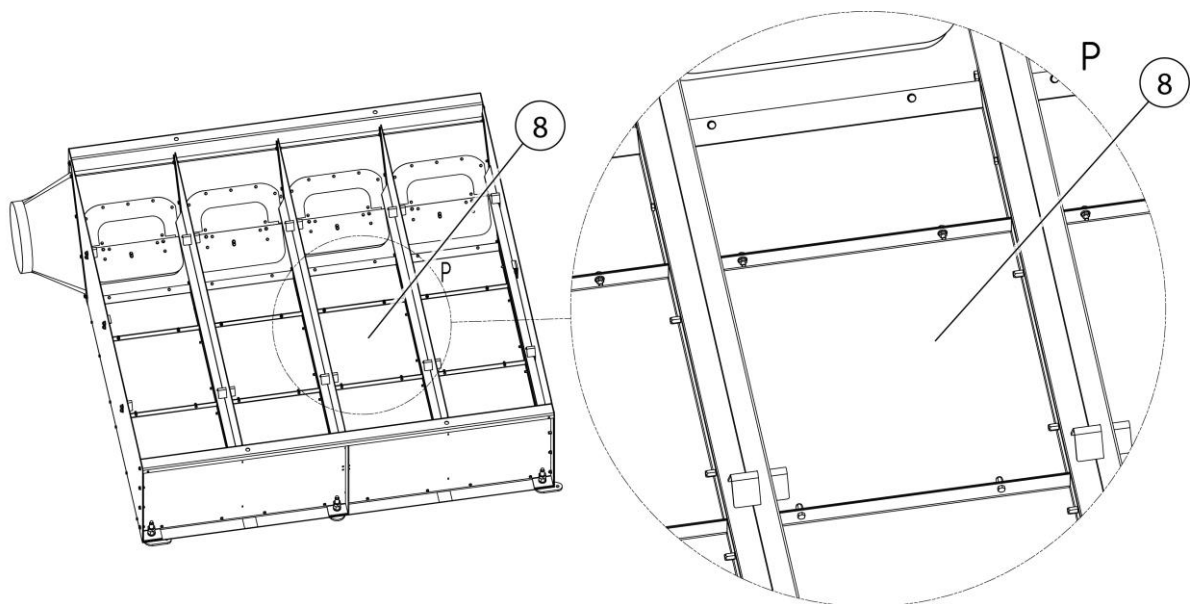


Fig. 11: Mounting – Base plates

6. Insert the base plates (Pos. 8) and screw them in place as shown in the figure.

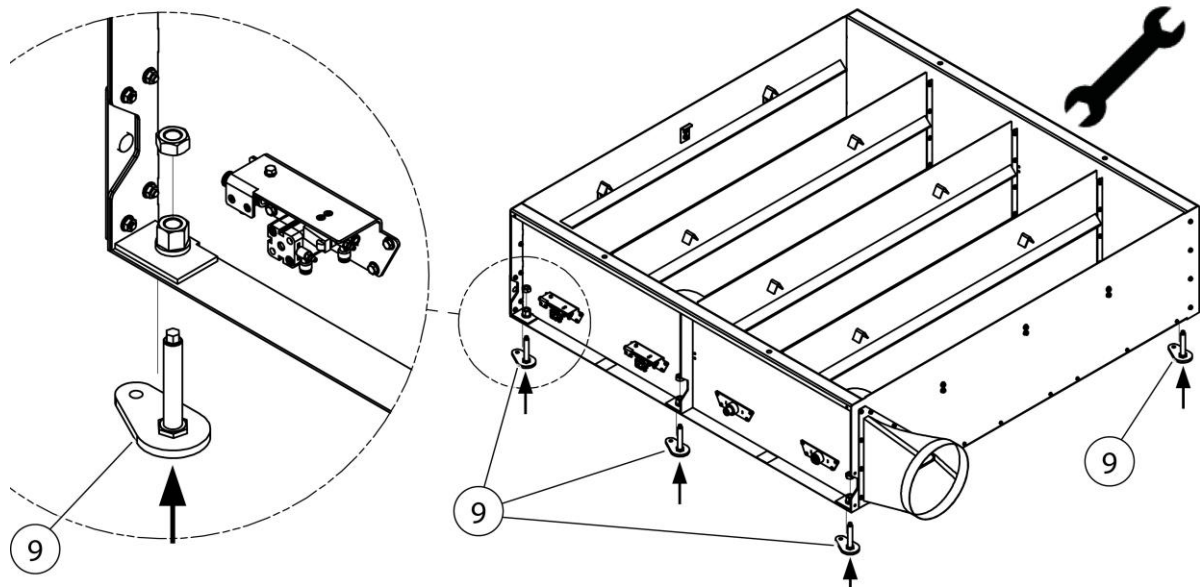


Fig. 12: Mounting – Machine feet (option)

7. Lift the product approx. 20 cm using suitable lifting equipment and screw the machine feet (Pos. 9) into the threads provided on the table as shown in the figure.
8. Place the product at its destination and level it using a spirit level. Use a suitable spanner to align or adjust the machine feet.

NOTE

When adjusting, make sure that all machine feet are loaded evenly to ensure that the product is stable.

Mounting – Compressed air connection (option)

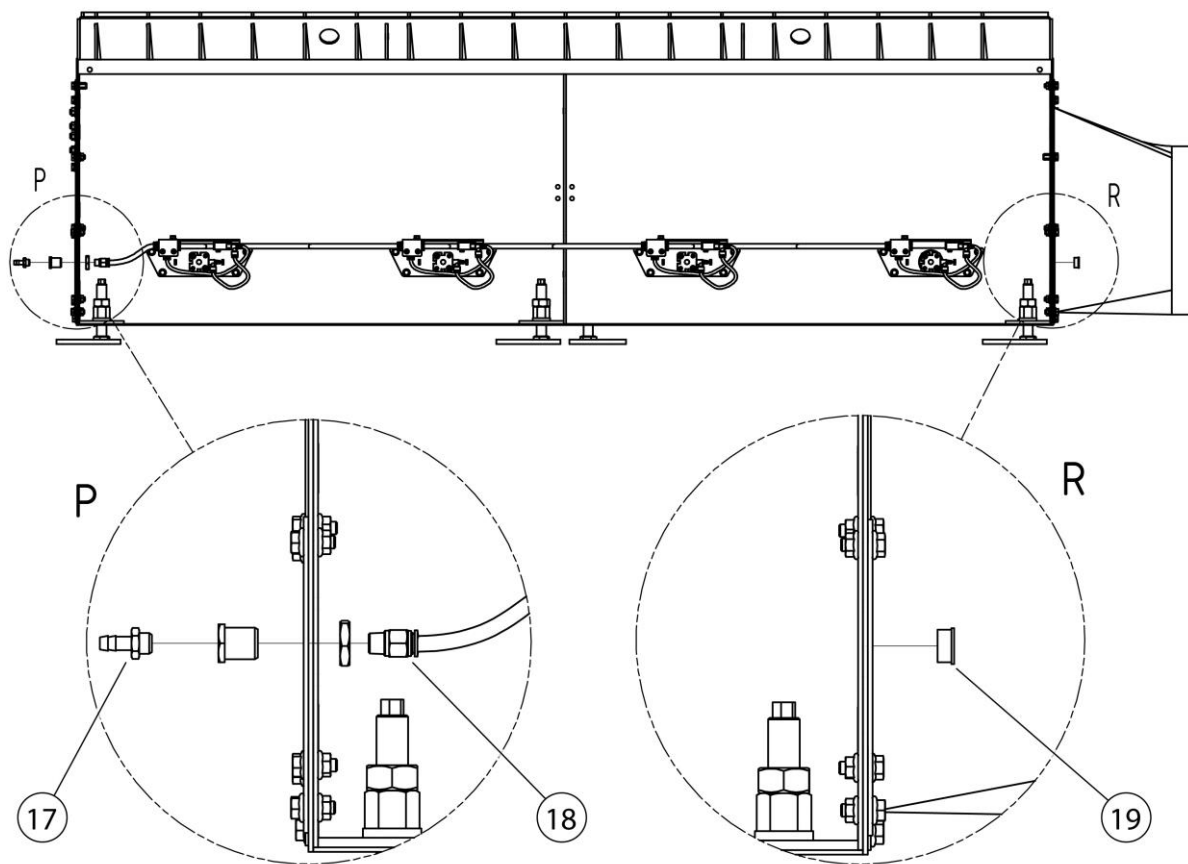


Fig. 13: Mounting – Compressed air connection

Pos.	Description	Pos.	Description
17	Hose grommet (with connecting material)	18	Compressed air hose
19	Plug		

Tab. 5: Mounting – Compressed air connection

9. Connect the compressed air hose (Pos. 18) to the hose grommet (Pos. 17) as shown in the figure.
10. Press the plug (Pos. 19) into the unused hole on the opposite side.

Mounting – Connecting extraction tables (option)

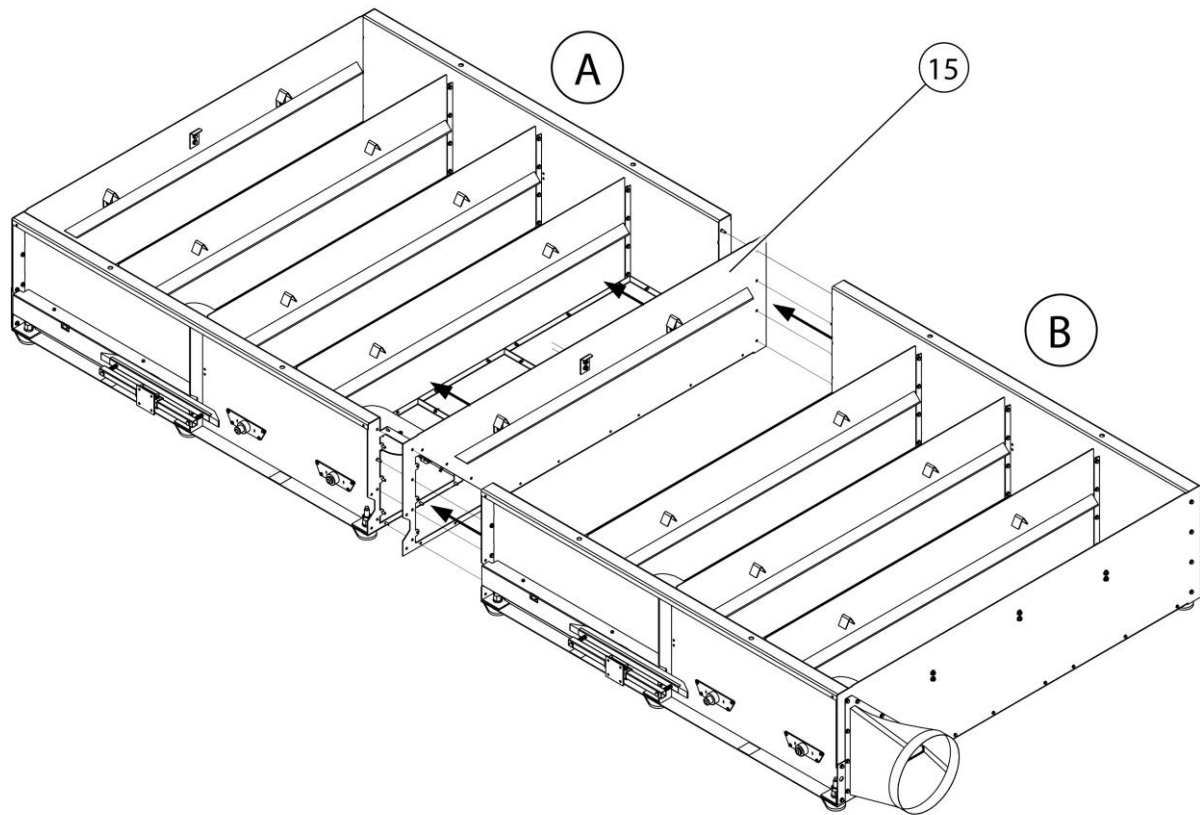


Fig. 14: Mounting – Connecting extraction tables (option)

Pos.	Description	Pos.	Description
A	Extraction table 1	15	Partition wall
B	Extraction table 2		

Tab. 6: Mounting – Connecting extraction tables (option)

11. Remove the tensioning straps, packaging film and transport restraints.
12. Place the two tables (Pos. A + B) at their destination and align them as shown in the figure.
13. When connecting the two tables (Pos. A + B), ensure that the machine feet are set to the same height and aligned with the connecting holes.

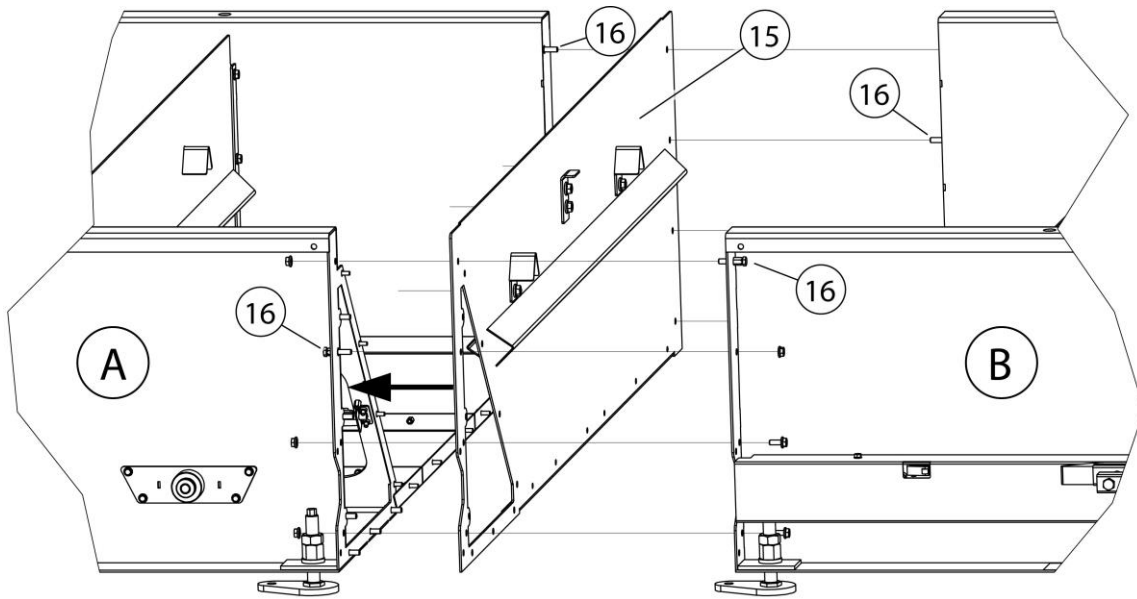


Fig. 15: Mounting – Connecting extraction tables

Pos.	Description	Pos.	Description
15	Partition wall	16	Hexagon bolt

Tab. 7: Mounting – Connecting extraction tables

14. Screw the enclosed slightly longer screws (Pos. 16) into the rivet nuts as shown in the figure.

NOTE

The hexagon bolts (Pos. 16) serve as guide screws for hooking in the partition wall (Pos. 15).

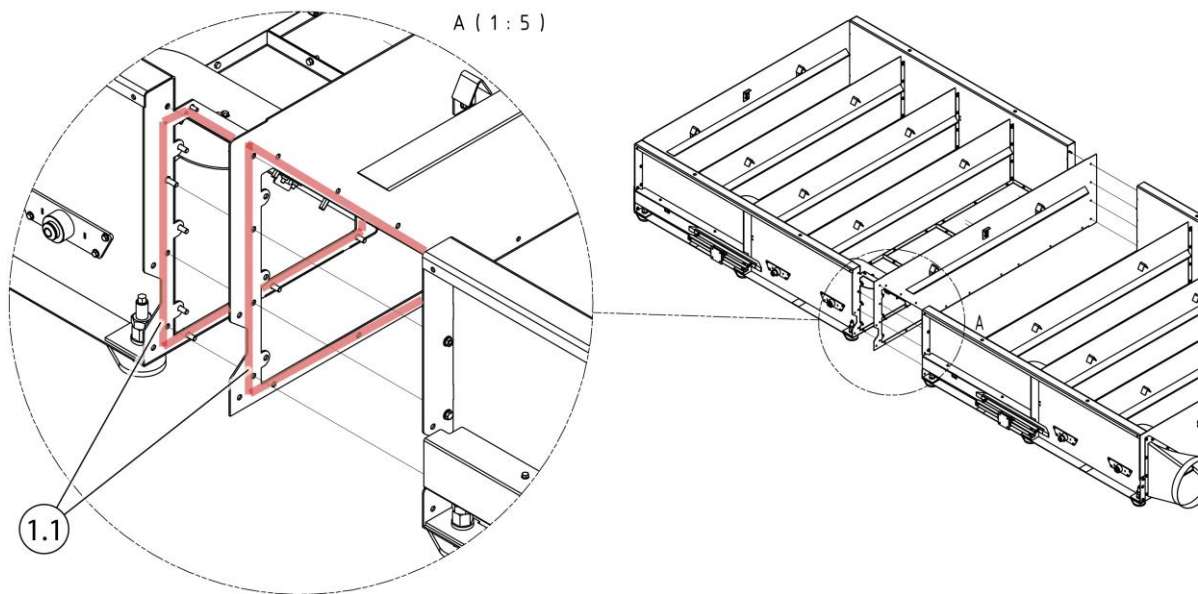


Fig. 16: Mounting – Connecting the extraction tables

15. Apply the enclosed sealing tape to the flange surfaces of the air channel (Pos. 1.1) as shown in the figure.

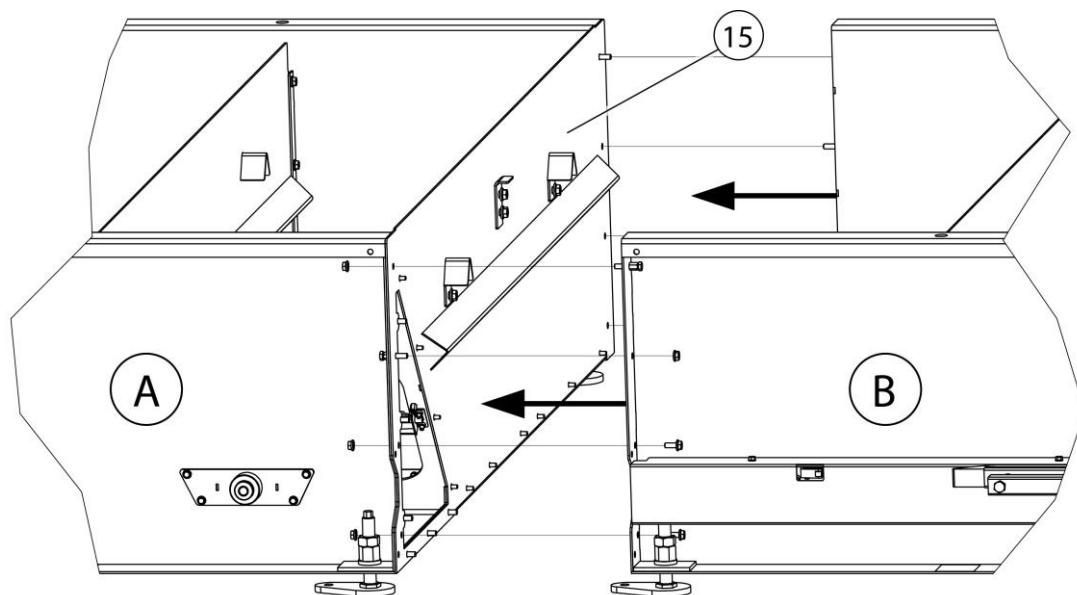


Fig. 17: Mounting – Connecting the extraction table

16. Slide the partition wall (Pos. 15) with the holes provided over the guide screws (Pos. 16).

17. Connect the extraction table (B) to the extraction table (A) and then screw them together using the enclosed fixing materials.

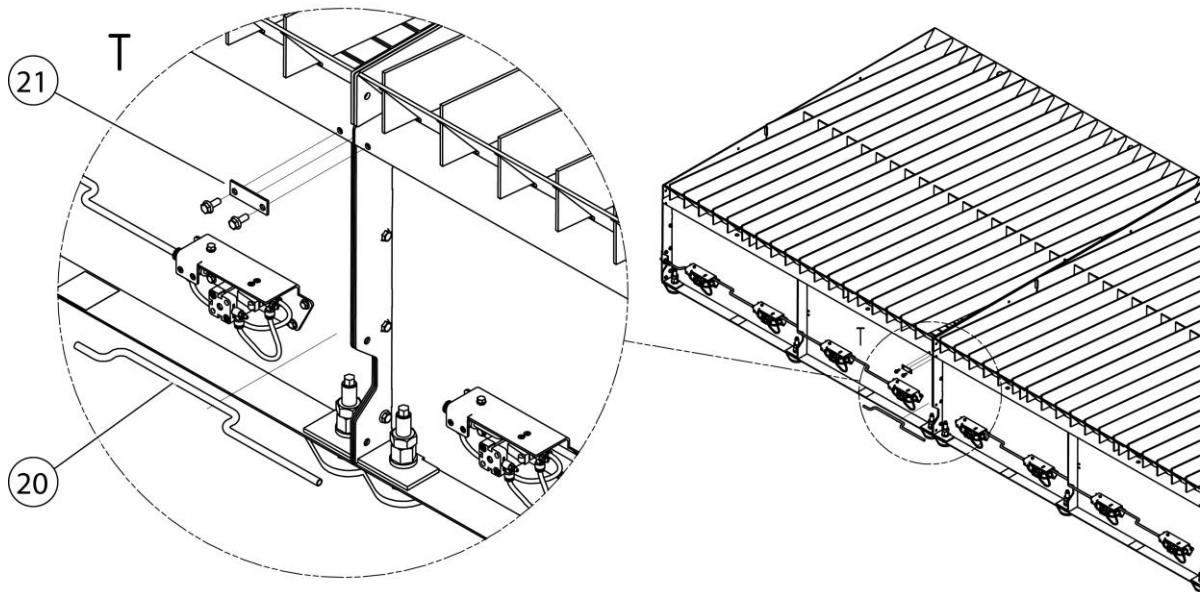


Fig. 18: Mounting – Connecting the earthing + compressed air

Pos.	Description	Pos.	Description
20	Compressed air hose	21	Earthing plate (earthing strip)

Tab. 8: Mounting – Connecting the earthing + compressed air

18. Connect the tables (A + B) with the compressed air hose (Pos. 20) and the earthing plate (Pos. 21) as shown in the figure.

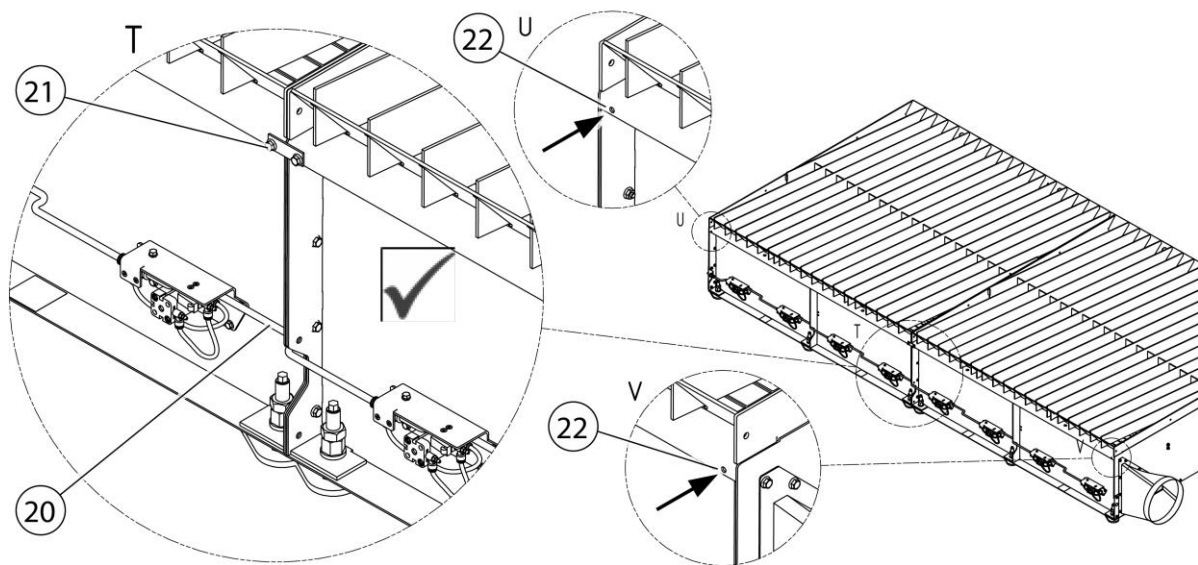


Fig. 19: Mounting – Connecting the earthing

ATTENTION

The earth cable of the plasma torch can be connected to the holes (Pos. 22).

Continuing the mounting

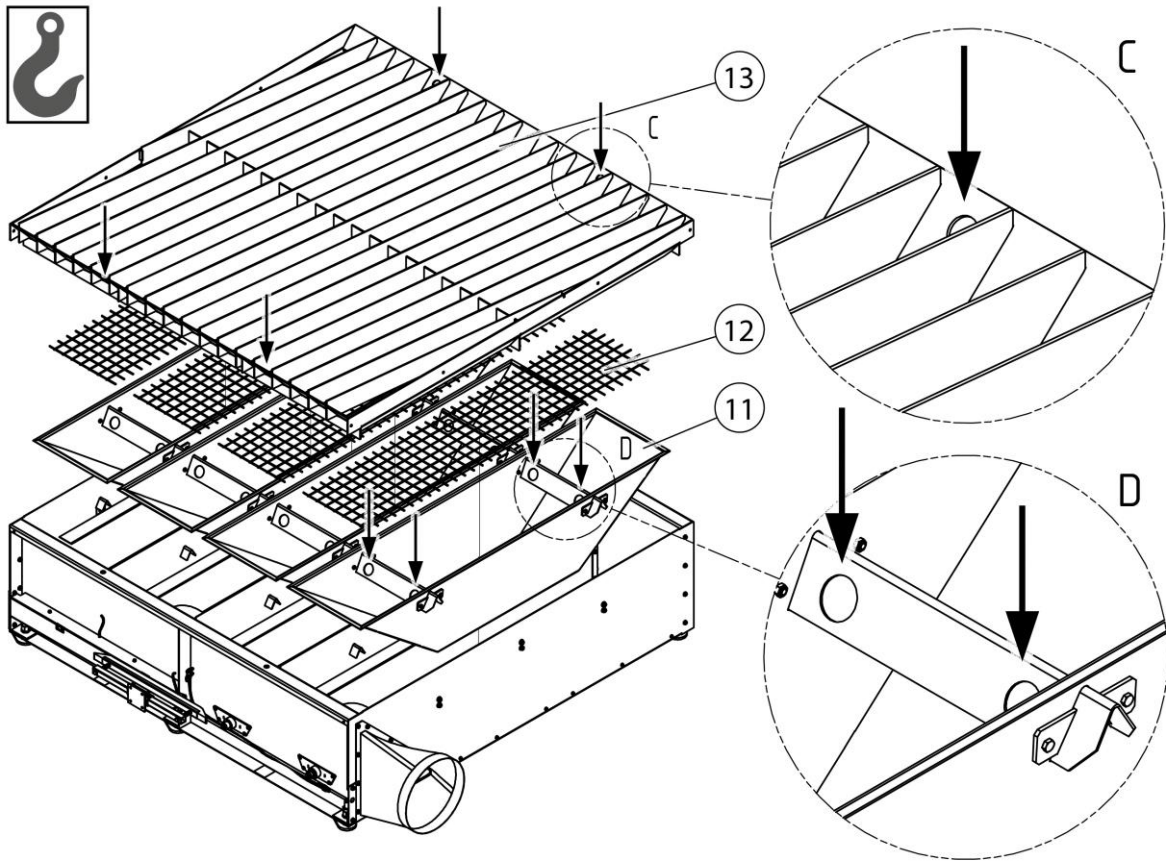


Fig. 20: Mounting – Slag box, steel grating, support frame

Pos.	Description	Pos.	Description
11	Slag box	13	Support frame
12	Steel grating		

Tab. 9: Mounting – Slag box, steel grating, support frame

⚠ DANGER

Danger due to suspended loads – Transport crane lugs

Only transport components with suitable lifting equipment using the crane lugs provided.

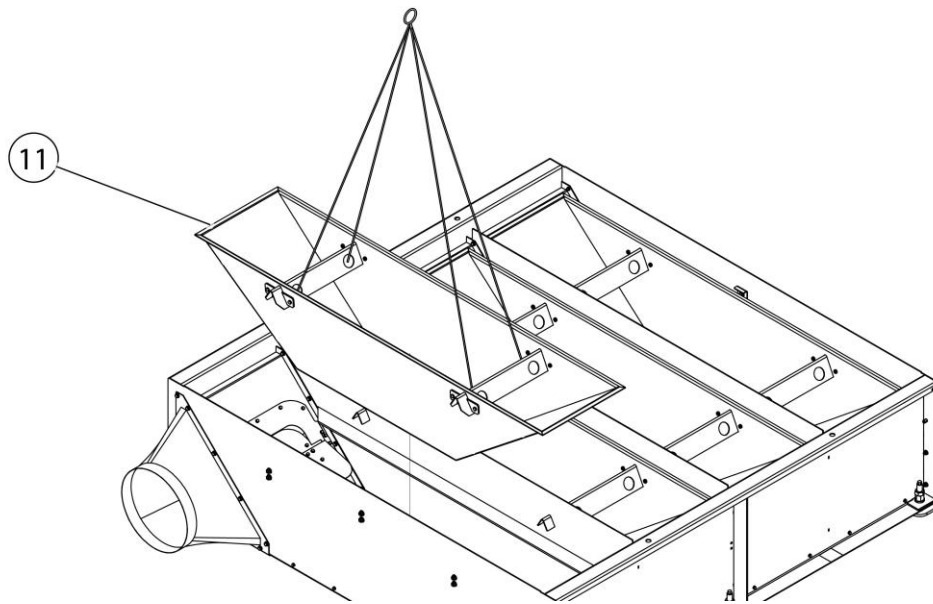


Fig. 21: Mounting – Inserting the slag boxes

19. Insert the slag boxes (Pos. 11) using suitable lifting equipment.

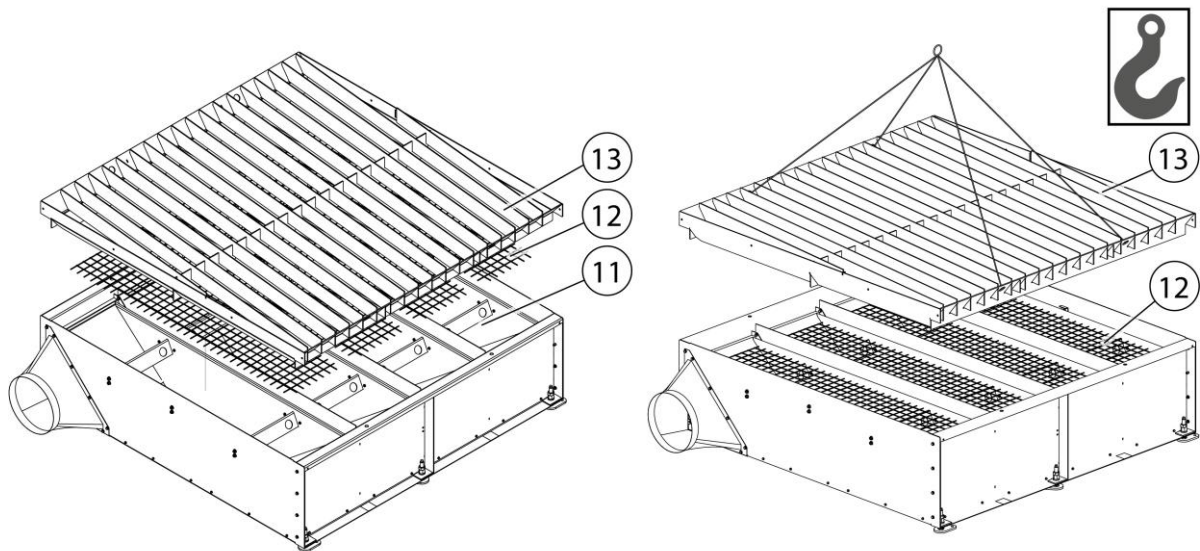


Fig. 22: Mounting – Steel grating + support frame

20. Insert the steel grating (Pos. 12).

21. Then attach the support frame (Pos. 13) using suitable lifting equipment.

6 Use

Every person who deals with use, maintenance and repair of the product must have thoroughly read these operating instructions as well as the instructions for any attachment and accessory products and have understood them.

6.1 Qualification of the operating personnel

The operating company of the product may only commission persons to use the product independently if they are well-versed in this task.

Those familiar with this task includes those who have been instructed appropriately in the task and know the operating instructions as well as the operational issues in question.

The product should only be used by trained or instructed personnel. This is the only way to ensure safety and hazard awareness of all personnel during work.

6.2 Commissioning

▲ WARNING

Danger due to faulty product condition.

The product must be fully installed before commissioning begins. All doors must be closed and the necessary connections must have been made.

1. Depending on the product variant, connect the product to the on-site compressed air network.
2. Switch on the connected extraction and filter system.

If there is a fault, please refer to the "Troubleshooting" chapter.

7 Maintenance

The instructions in this chapter are intended as minimum requirements. Depending on the operating conditions, further instructions may be required to keep the product in optimal condition.

The maintenance and repair work described in this chapter must only be performed by specially trained repair personnel of the operating company.

Spare parts used must comply with the manufacturer's specified technical requirements.

This is guaranteed if original spare parts are used.

The safe and environmentally friendly disposal of operating materials and replacement parts must be ensured.

The safety instructions in these operating instructions must be observed during maintenance work.

7.1 Safety instructions for maintenance

Regular inspection and servicing have a positive effect on the reliable functioning of the product.

Observe the warning notices for servicing and troubleshooting in the "Safety" chapter.

Maintenance of the product is essentially limited to visual inspection and checking for damage, signs of wear and leaks.

In addition, the following maintenance points must be carried out:

⚠ WARNING

Health hazards caused by welding fume particles

Inhalation of welding fume particles, especially welding fume particles from welding processes on alloyed steels, can damage your health as they are 'respirable'. Skin contact with welding fume particles can cause skin irritation in sensitive individuals.

To avoid contact with and inhalation of these dust particles, wear disposable overalls, protective goggles, gloves and a suitable Class FFP2 respiratory protection filter mask in accordance with EN 149.

ATTENTION

Avoid whirling up welding particles!

Carry out maintenance work with caution and care when in possible contact with welding fume particles. Avoid vibrations and shocks!

ATTENTION

Do not clean the product with compressed air. This may result in dust particles getting into the ambient air.

Always ensure there is adequate lighting and ventilation for maintenance tasks.

7.2 Care

The care of the product is essentially limited to cleaning all surfaces of the product and – if present – checking the filter inserts.

The warning notices listed in the chapter "Safety notes for maintenance and fault removal" must be observed.

NOTE

The product may not be cleaned with compressed air. This may result in dust and/or dirt particles getting into the ambient air.

Proper care helps to maintain the product in a continuous functional state.

For optimum care and cleaning of the powder-coated surfaces, the following must be observed:

- Thoroughly clean the product monthly or as needed.
- Clean the exterior areas of the product with a suitable industrial vacuum cleaner of dust classification H or with damp soft cloths/industrial cotton wool.
- For stubborn dirt, use commercially available household cleaners. Avoid vigorous rubbing.
- Do not use any abrasive agents that scratch.
- Do not use any acidic or strongly alkaline cleaning agents.
- Do not use organic solvents containing esters, ketones, alcohols, hydrocarbons or similar.

7.2.1 Maintenance schedule

Activities	Time/interval	Information:
Emptying the dust collection container	As required	
Checking the section air flaps for proper function and leak-tightness	As required, but at least once per month	See spare parts and accessories
Checking the connected ducting system for leak-tightness	As required, but at least once per month	
Check the support frame for severe damage.		See spare parts and accessories
Checking the steel grating for severe damage		See spare parts and accessories
Checking the control slide for correct positioning/function	As required, but at least once per month	

Tab. 10: Maintenance schedule

7.2.2 Emptying the dust collection container

The fill level of the dust collection container must be checked at regular intervals. The time period within which the dust collection container needs to be emptied depends on the type and amount of use of the separated dust and abrasive particles. It is not therefore possible to give an exact indication of the cleaning interval.

The connected extraction system should remain switched on during cleaning and when emptying the dust collection container, so that any dust particles that are stirred up are extracted directly.

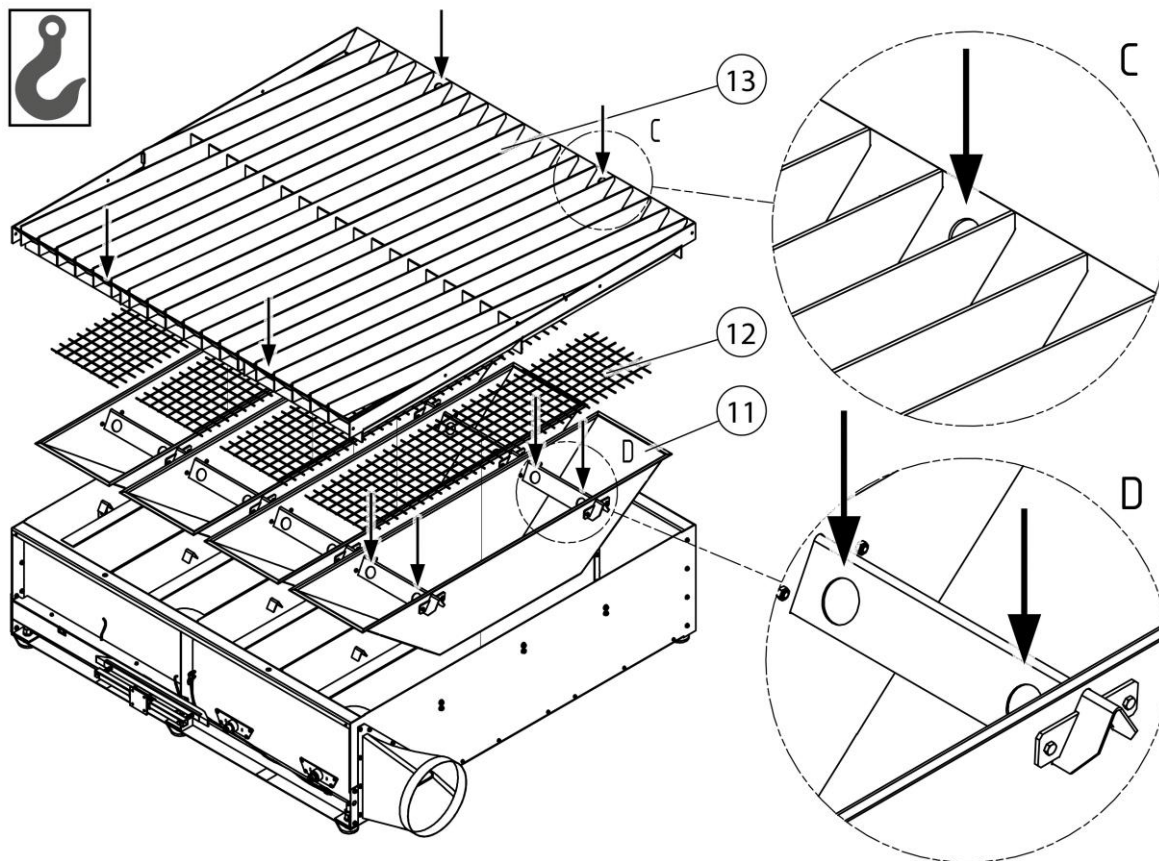


Fig. 23: Emptying the dust collection container

Pos.	Description	Pos.	Description
11	Slag box	13	Support frame
12	Steel grating		

Tab. 11: Positions on the product

When emptying the dust collection container, please proceed as follows:

⚠ WARNING

Risk of crushing due to falling components!

Only use suitable lifting equipment to remove the components.

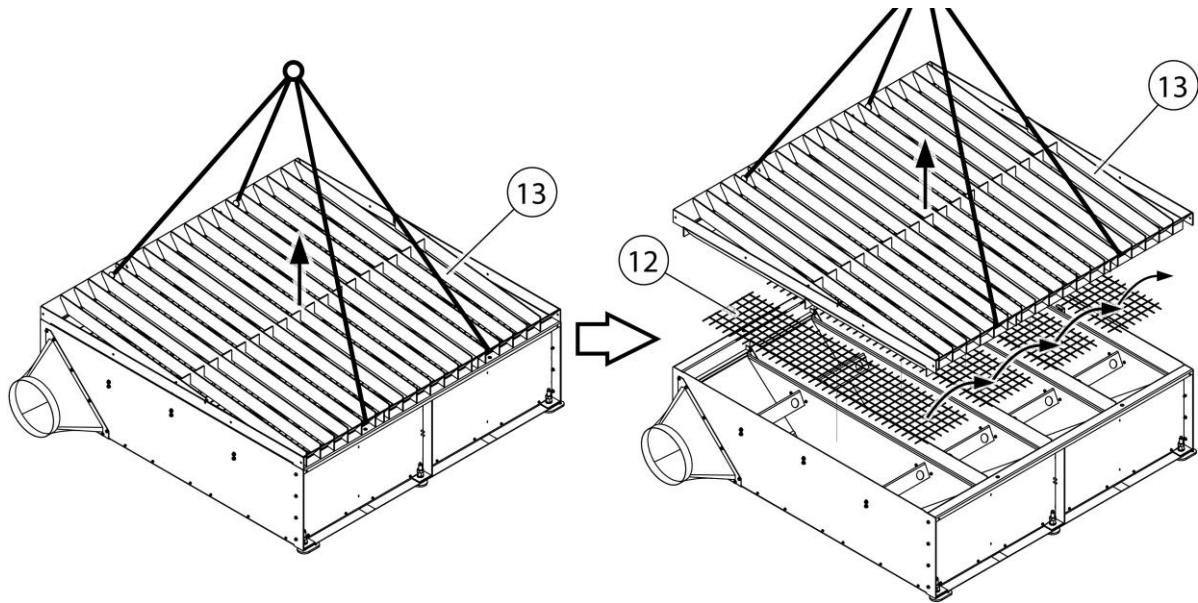


Fig. 24: Maintenance – Removing the support frame + steel grating

1. Remove the support frame (Pos. 13) from the product and set aside. Use the four suspension holes for lifting.
2. Lift off the steel gratings (Pos. 12) and set aside.

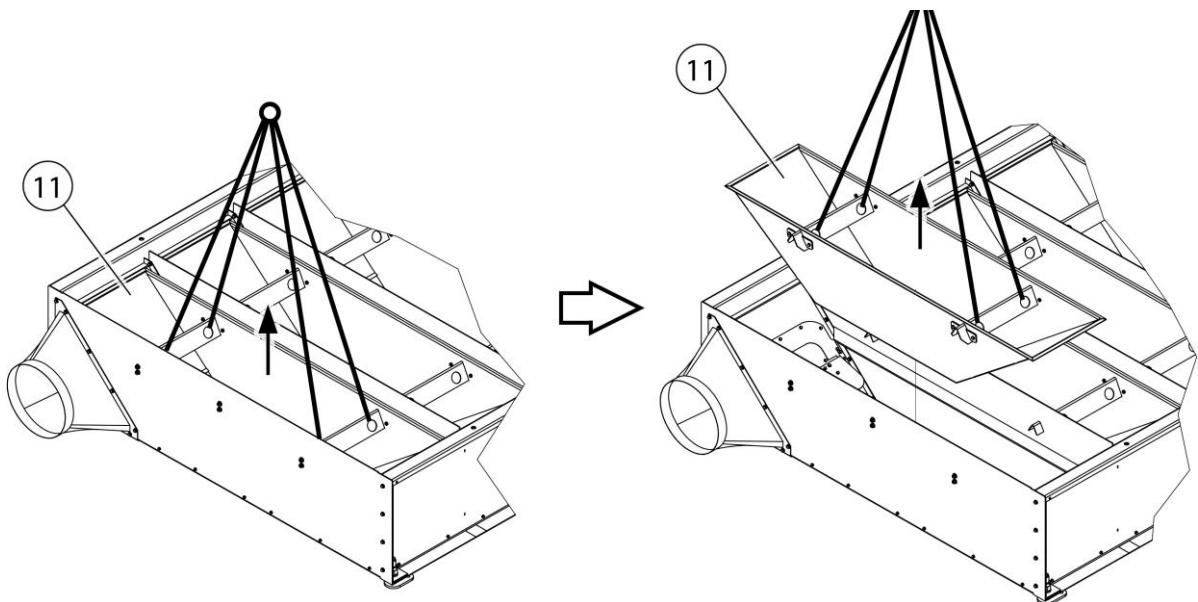


Fig. 25: Maintenance – Removing the slag boxes

3. Remove the slag box (Pos. 11) from the product as shown in the figure. To lift, use the four suspension holes as shown in the figure.
4. Empty the slag box (Pos. 3) and dispose of the slag in accordance with the applicable regulations.

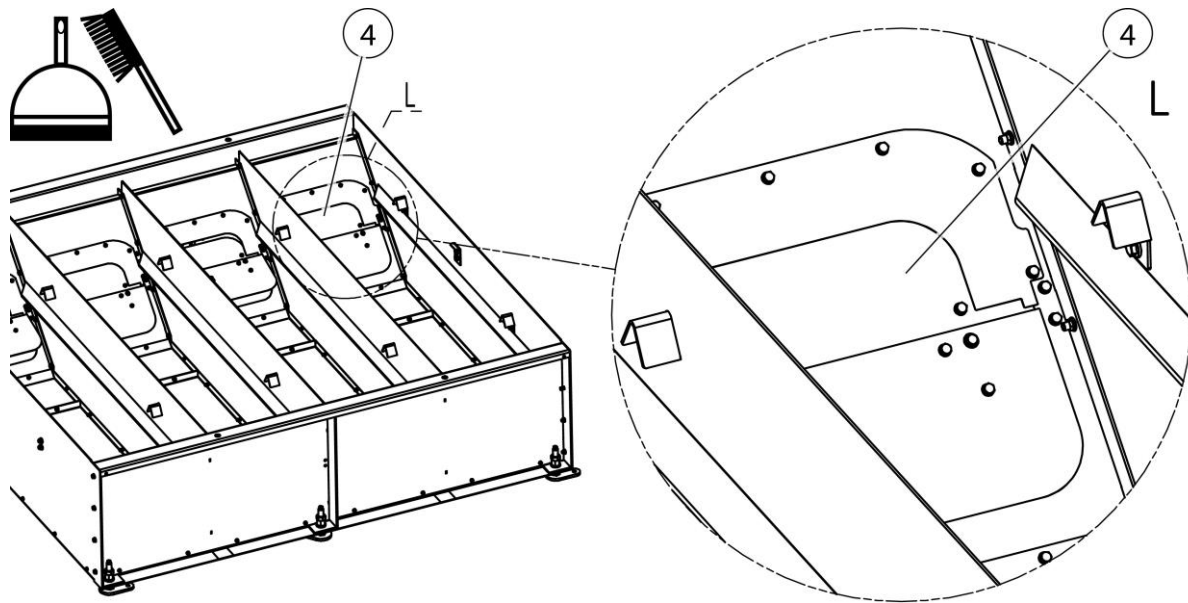


Fig. 26: Cleaning the butterfly valves

5. Clean the butterfly valves (Pos. 4) and the base of the product with a hand brush and dustpan.
6. After the cleaning process, reinsert the slag box (Pos. 11) into the product.
7. Carry out this emptying process for each slag box.
8. After the emptying process and the cleaning, replace the steel gratings (Pos. 12) and the support frame (Pos. 13).

7.3 Troubleshooting

Fault	Possible cause	Note
No smoke/dust particles are captured	Air flap to the individual sections closed	Control slide of the torch system not positioned correctly. For product variant with compressed air-operated air flaps, check the compressed air supply.
Air flap closes very	Throttle valve of the air flap misaligned	Adjust the throttle valve

slowly/quickly (only for products with compressed air actuation)	Compressed air supply faulty	Check compressed air supply (5-6 bar)
Not all dust particles are being captured	Connected extraction system not switched on	Switch on extraction system
	Connected extraction system incorrectly adjusted	Set the extraction capacity according to the legal requirements
	Blockage in the connected ducting system	Clear blockage

Tab. 12: Troubleshooting

NOTE

If the fault cannot be corrected by the customer, please contact the manufacturer’s service department.

7.4 Emergency measures

In case of fire of the product or in case of fire of the connected products, the following steps must be taken:

1. Stop the oxygen supply! To do this, switch off the product or the connected products and disconnect them from the mains.
2. If present, disconnect the compressed air supply.
3. Fight fire with a commercially available dry powder extinguisher.
4. Notify local fire brigade if necessary.

⚠ WARNING

Do not open products with maintenance door. Flash flame formation!

In the event of a fire, do not touch the product under any circumstances without proper protective gloves. Risk of burns!

8 Disposal

▲ WARNING

Skin contact with welding fumes, etc. can cause skin irritation in susceptible individuals.

Disassembly work on the product may only be carried out by trained and authorised personnel while complying with the safety rules and the applicable accident prevention regulations.

Serious injury to the lungs and respiratory tract is possible!

In order to avoid contact with and inhalation of dust particles, use protective clothing, gloves and a blower respirator system.

The release of hazardous dust particles must be avoided during dismantling work so that persons in the vicinity are not harmed.

▲ CAUTION

All work on and with the product must comply with the legal obligations for waste avoidance and proper recycling/disposal.

8.1 Plastics

Plastics, if present, must be sorted as far as possible. Plastics must be disposed of in compliance with the legal requirements.

8.2 Metals

Metals, if present, must be separated and disposed of. Disposal must be carried out by an authorised company.

8.3 Filter elements

Filter elements, if present, must be disposed of in compliance with the legal requirements.

9 Annex

9.1 EC declaration of incorporation

Designation:	Add-on product
Series:	KemTab extraction tables
Type:	99840 XX XX (if necessary, different item numbers for other product variants)
Machine ID:	See name plate in front section of this operating manual The product has been developed, designed and manufactured as partly completed machinery in accordance with the EC Directives 2006/42/EC – Machinery Directive
Company:	At the sole responsibility of KEMPER GmbH Von-Siemens-Str. 20, D-48691 Vreden The partly completed machinery must not be put into service until it has been established that the machinery into which the partly completed machinery is to be incorporated complies with the 2006/42/EC Machinery Directive.

The following harmonised standards are used:


- EN ISO 12100:2010 Safety of machinery - General principles for design
- EN ISO 13857:2019 Safety of machinery - Safety distances
- EN ISO 13854:2019 Safety of machinery - Minimum gaps
- EN ISO 17916:2016 Safety of thermal cutting machines
- EN ISO 4414:2010 fluid power - General rules and safety requirements for systems and their components

A complete list of standards, directives and specifications applied is available from the manufacturer. The operating manual belonging to the product is available.

Additional information:

If it is not used for as intended or the design is altered, the Declaration of Conformity expires, unless confirmed in writing by us as manufacturers.

Mr Marcel Kusche is authorised to compile the technical documentation. Kemper GmbH, Von-Siemens-Str. 20, 48691 Vreden, Germany

Vreden, 17.12.2024		CEO
Place, date	B. KEMPER	Identification of the signatory

9.2 UKCA Declaration of Installation

Designation: Installation products
 Series: KemTab extraction tables
 Type: **99840 XX XX** (possibly different article numbers for other product variants)
 Machine ID: See name plate in front section of this operating manual
 This product is developed, designed and manufactured in accordance with the UKCA directives
 Supply of Machinery (safety) Regulations 2008
 Company: At the sole responsibility of **KEMPER GmbH**
 Von-Siemens-Str. 20, D-48691 Vreden

The following designated standards and technical specifications have been applied:

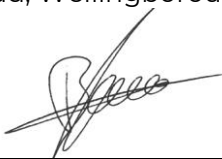
- BS EN ISO 12100:2010 Safety of machinery - General principles for design
- BS EN ISO 13857:2019 Safety of machinery - Safety distances
- BS EN ISO 13854:2019 Safety of machinery
- BS EN ISO 13857:2019 Safety of machinery - Safety distances
- BS EN ISO 4414:2010 fluid power - General rules and safety requirements for systems and their components

A complete list of standards, directives and specifications applied is available from the manufacturer. The operating manual belonging to the product is available.

Additional information:

If it is not used for as intended or the design is altered, the Declaration of Conformity expires, unless confirmed in writing by us as manufacturers.

UK Authorised Representative (for authorities only): Mr. Marc Crawford
 United Kingdom KEMPER (U.K.) Ltd.
 Venture Court, 2 Debdale Road, Wellingborough, Northamptonshire NN8 5AA

Vreden, 17.12.2024		CEO
Place, date	B. Kemper	Identification of the signatory

9.3 Dimensions sheet

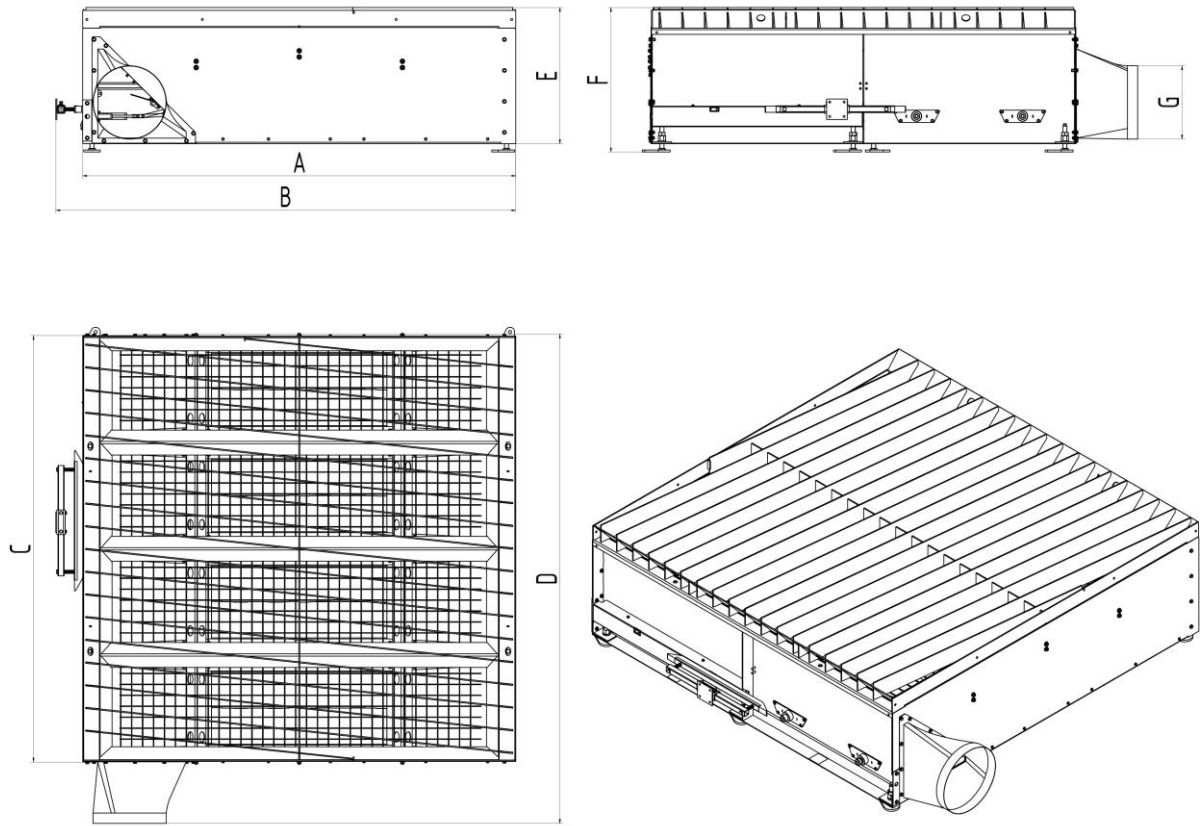


Fig. 27: Dimensions sheet

Symbol	Dimensions mm [in]	Symbol	Dimensions mm [in]
A	2100 [82.7]	E	660 [26.0]
B	2230 [87.8]	F	700 [27.6]
C	2066 [81.3]	G	355 [14.0]
D	2370 [93.3]		

Tab. 13: Dimensions table

9.4 Technical data

Description	Type		
Basic data	99840 XX XX		
Connection diameter mm [in]	355 [14.0]		
Required extraction volume	--		
Load capacity (sheet thickness) mm [in]	150 [5.9]		
Load capacity per m ² static kg [lbs]	1200 [2646]		
Compressed air supply (option) bar [PSI]	5 – 6 [73 – 87]		
Compressed air class	2:4:2 ISO 8573-1		
Weight max. per m ² kg [lbs]	270		
Segments per table	4	3	2 x 2
Segment distance mm [in]	515 [20.3]	690 [27.2]	1030 [40.6]
Dimensions	See dimension sheet		

Tab. 14: Technical data

9.5 Spare parts and accessories

Consec. no.	Description	Part no.
1	Mechanical-pneumatic flap control	1350425
2	Electrical-pneumatic flap control	1350426
3	Mechanical flap control	1350427
4	Mechanical/electro-pneumatic flap control	1350428
5	Air flap for 4 sections/2 sections	1350429
6	Air flap for 3 sections	1350430

Tab. 15: Spare parts and accessories

Deutschland (HQ)**KEMPER GmbH**

Von-Siemens-Str. 20
D-48691 Vreden
Tel. +49 2564 68-0
Fax +49 2564 68-120
mail@kemper.eu
www.kemper.eu

United Kingdom**KEMPER (U.K.) Ltd.**

Venture Court
2 Debdale Road
Wellingborough
Northamptonshire NN8 5AA
Tel. +44 1327 872 909
Fax +44 1327 872 181
mail@kemper.co.uk
www.kemper.co.uk

France**KEMPER sàrl**

7 Avenue de l'Europe
F-67300 Schiltigheim
Si vous appelez de France
Tél. +33 800 91 18 32
Fax +33 800 91 90 89
De Belgique ou de l'étranger
Tél. +492564 68-135
Fax +492564 68-40135
mail@kemper.fr
www.kemper.fr

China**KEMPER China**

Floor 2, Building 6
No. 500 Huapu Road
Shanghai 201799
P.R. of China
Tel. +86 (21) 5924-0978
Fax +86 1852-1069-401
info@kemper-china.com.cn
www.kemper.cn.com

Česká Republika**KEMPER spol. s r.o.**

Pyšelská 393
CZ-257 21 Poříčí nad Sázavou
Tel. +420 317 798-000
Fax +420 317 798-888
mail@kemper.cz
www.kemper.cz

United States**KEMPER America, Inc.**

2460 Industrial Park BLVD.
Cumming, GA 30041
Tel. +1 770 416 7070
Fax +1 770 828 0643
info@kemperamerica.com
www.kemperamerica.com

Nederland**KEMPER B.V.**

Demmersweg 92
Begane grond
7556 BN Hengelo
Tel. +492564 68-137
Fax +492564 68-120
mail@kemper.eu
www.kemper.eu

España**KEMPER IBÉRICA, S.L.**

Avda Diagonal, 421 3º
E-08008 Barcelona
Tel. +34 902 109-454
Fax +34 902 109-456
mail@kemper.es
www.kemper.es

India**KEMPER India**

55, Ground Floor, MP Mall
MP Block, Pitam Pura
New Delhi -110034
Tel. +91.11.42651472
mail@kemper-india.com
www.kemper-india.com

Polska**Kemper Sp. z o.o.**

ul. Grzybowska 87
00-844 Warszawa
Tel. +48 22 5310 681
Faks +48 22 5310 682
info@kemper.pl
www.kemper.pl

